



GAT MONTHLY MEMBERSHIP PROGRESS REPORT

Results as of: 1/31/2021

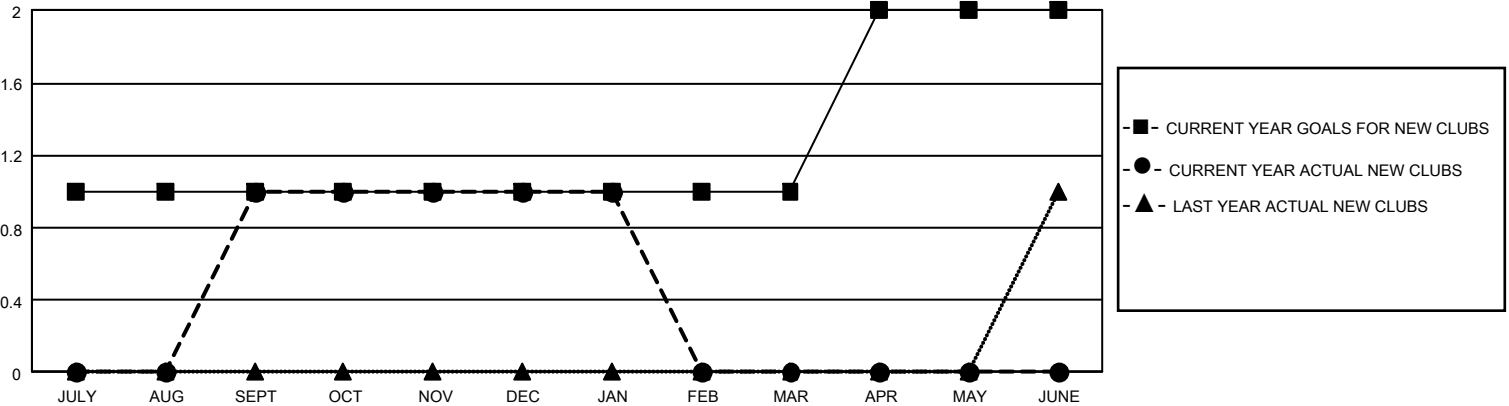
GMT Constitutional Area 5 - C, Group E

REPORT DOES NOT INCLUDE CLUBS IN UNDISTRICTED AREAS.

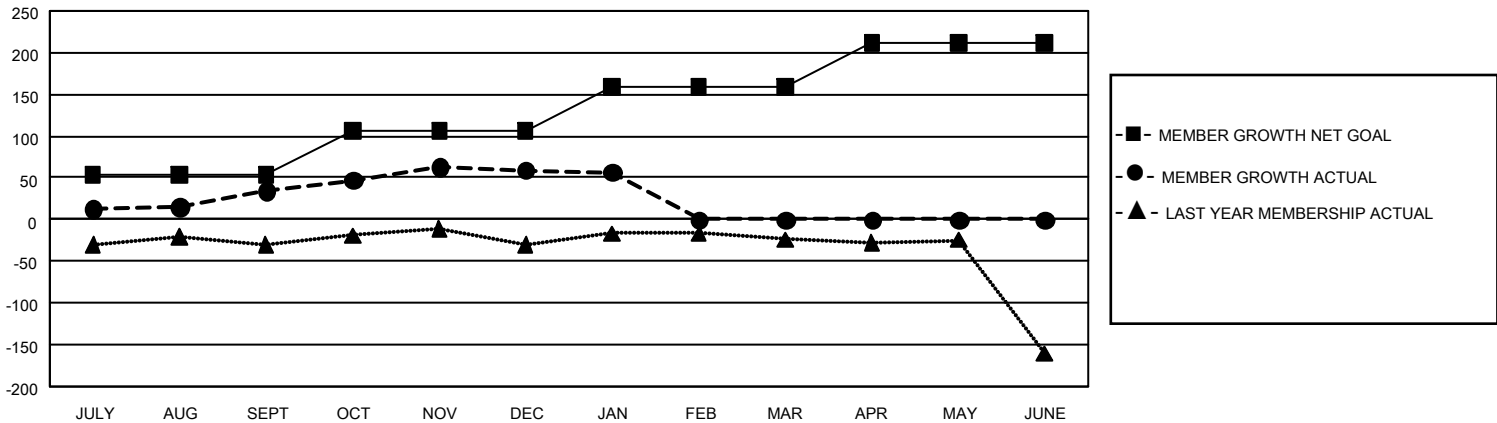
| Clubs | | | |
|-----------------------|---------------|-----------|---------------|
| RESULTS FOR 2020-2021 | | | |
| QUARTER | NEW CLUB GOAL | NEW CLUBS | DROPPED CLUBS |
| JULY/AUG/SEPT | 3 | 1 | 0 |
| OCT/NOV/DEC | 0 | 0 | 0 |
| JAN/FEB/MAR | 0 | 0 | 0 |
| APR/MAY/JUNE | 3 | 0 | 0 |

| Members | | | |
|-----------------------|------------------------|----------------------|--|
| RESULTS FOR 2020-2021 | | | |
| QUARTER | MEMBER GROWTH NET GOAL | MEMBER GROWTH ACTUAL | DROPPED MEMBERS ACTUAL (including transfers) |
| JULY/AUG/SEPT | 53 | 159 | 100 |
| OCT/NOV/DEC | 53 | 71 | 43 |
| JAN/FEB/MAR | 53 | 10 | 7 |
| APR/MAY/JUNE | 53 | 0 | 0 |

GOALS AND ACTUAL NEW CLUBS CUMULATIVE



GOALS AND ACTUAL MEMBERS CUMULATIVE



| | | | |
|------------------------|--|------------------------------------|----------------|
| DROPPED CLUBS: 0 | 48 CLUBS OF 95 ADDED 1 OR MORE NEW MEMBERS | <u>GENDER DISTRIBUTION</u> | |
| <u>DROPPED MEMBERS</u> | | MALE | 1,576 (71.18%) |
| DECEASED | 5 | FEMALE | 638 (28.82%) |
| CLUB CANCELLED | 0 | TOTAL FAMILY UNIT MEMBERS 60 | |
| OTHER | 145 | FAMILY MEMBERS PAYING HALF DUES 35 | |
| TOTAL | 150 | | |

[CLICK HERE FOR CUMULATIVE MEMBERSHIP DATA](#)